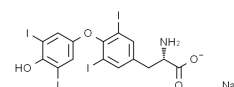




## Product Specifications

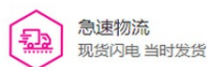
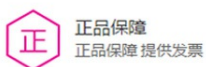
Structure:

Name	L-甲状腺素钠
EN Name	Sodium levothyroxine
Catalog	S47800
CAS	25416-65-3
M.F.	$C_{15}H_{10}I_4NNaO_4 \cdot xH_2O$
M.W.	816.87



Test	Norm
Appearance	Light yellow to buff-colored solid
Specific Optical	C=3, 1N NaOH:C <sub>2</sub> H <sub>5</sub> OH=1:2, -5--6
Assay	≥95%

Shanghai Acmec Biochemical Co.,Ltd.  
1301 Rm,NO.1,1588 Wangyuan South Rd,Fengxian,Shanghai



产品仅供科研!