

### Appearance

类白色至浅粉色粉末

### Purity

98%

### Solubility

5mg/mL, MeOH

Hi, 欢迎来到吉至生化, 品质好, 服务好! 热线: 400-900-4166

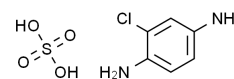


上海吉至生化科技有限公司  
Shanghai Acmec Biochemical Technology Co.,Ltd.

## Product Specifications

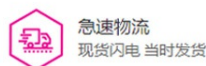
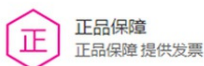
Structure:

Name	2-氯-1,4-苯二胺硫酸盐
EN Name	2-Chloro-1,4-phenylenediamine Sulfate
Catalog	C73320
CAS	61702-44-1
M.F.	C H C I N O S
M.W.	240.67



Test	Norm
Appearance	类白色至浅粉色粉末
Purity	98%
Solubility	5mg/mL, MeOH

Shanghai Acmec Biochemical Co.,Ltd.  
1301 Rm,NO.1,1588 Wangyuan South Rd,Fengxian,Shanghai



产品仅供科研!