

Anti-PARG Polyclonal Antibody

Cat: AC50997

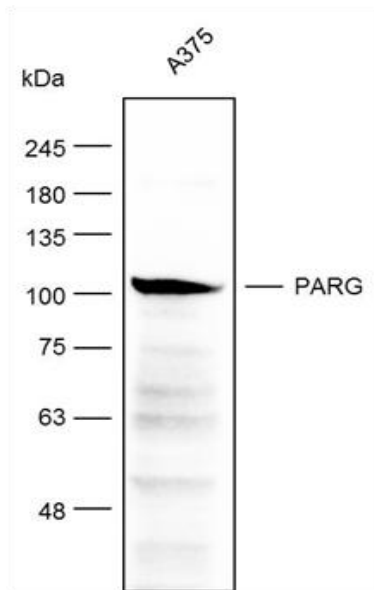
Summary:

- 【Product name】** : Anti-PARG antibody **【Source】** : Rabbit
- 【Isotype】** : IgG **【Species reactivity】** : Human, Mouse, Rat
- 【Swiss Prot】** : Q86W56 **【Gene ID】** : 8505
- 【Calculated】** : MW: 111kDa **【Observed】** : MW: 111kDa
- 【Purification】** : Affinity purification
- 【Tested applications】** : WB
- 【Recommended dilution】** : WB 1:1000-2000.
- 【WB Positive sample】** : A375
- 【Subcellular location】** : Cytoplasm Mitochondrion Mitochondrion matrix Nucleus.
- 【Immunogen】** : Recombinant protein of human PARG.
- 【Storage】** : Shipped at 4°C. Upon delivery aliquot and store at -20°C

Background:

Poly(ADP-ribose) glycohydrolase (PARG) is the major enzyme responsible for the catabolism of poly(ADP-ribose), a reversible covalent-modifier of chromosomal proteins. The protein is found in many tissues and may be subject to proteolysis generating smaller, active products. Several transcript variants encoding different isoforms have been found for this gene.

Verified picture



Western blot analysis with PARG antibody
diluted at 1:1000