

Anti-GDF15 Polyclonal Antibody

Cat: AC50575

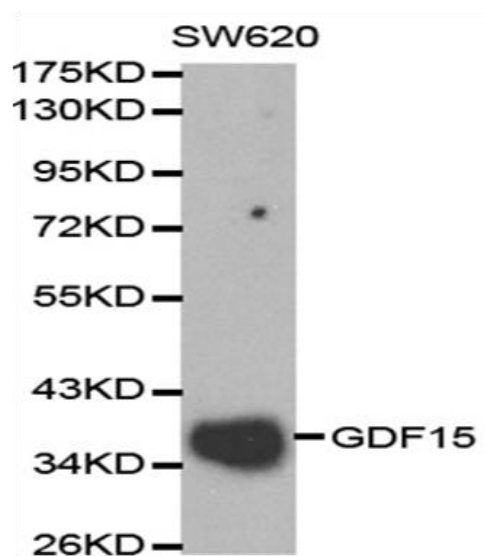
Summary:

- 【Product name】** : Anti-GDF15 antibody **【Source】** : Rabbit
【Isotype】 : IgG **【Species reactivity】** : Human, Mouse, Rat
【Swiss Prot】 : Q99988 **【Gene ID】** : 9518
【Calculated】 : MW: 34kDa **【Observed】** : MW: 38kDa
【Purification】 : Affinity purification
【Tested applications】 : WB
【Recommended dilution】 : WB 1:500-2000.
【WB Positive sample】 : SW620
【Subcellular location】 : Secreted
【Immunogen】 : Recombinant protein of human GDF15.
【Storage】 : Shipped at 4°C. Upon delivery aliquot and store at -20°C

Background:

This gene encodes a secreted ligand of the TGF-beta (transforming growth factor-beta) superfamily of proteins. Ligands of this family bind various TGF-beta receptors leading to recruitment and activation of SMAD family transcription factors that regulate gene expression. The encoded preproprotein is proteolytically processed to generate each subunit of the disulfide-linked homodimer. The protein is expressed in a broad range of cell types, acts as a pleiotropic cytokine and is involved in the stress response program of cells after cellular injury. Increased protein levels are associated with disease states such as tissue hypoxia, inflammation, acute injury and oxidative stress.

Verified picture



Western blot analysis with GDF15 antibody
diluted at 1:2000