

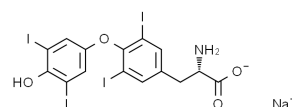


上海吉至生化科技有限公司
Shanghai AcmeC Biochemical Technology Co, Ltd.

Product Specifications

Structure:

Name	L-甲状腺素钠
EN Name	Sodium levothyroxine
Catalog	S47800
CAS	25416-65-3
M.F.	C ₁₅ H ₁₀ I ₄ NNaO ₄ ·xH ₂ O
M.W.	816.87



Test	Norm
Appearance	Light yellow to buff-colored solid
Specific Optical	C=3, 1N NaOH:C ₂ H ₅ OH=1:2, -5--6
Assay	≥98%

Shanghai AcmeC Biochemical Co, Ltd.
1301 Rm, NO.1, 1588 Wangyuan South Rd, Fengxian, Shanghai



产品仅供科研!