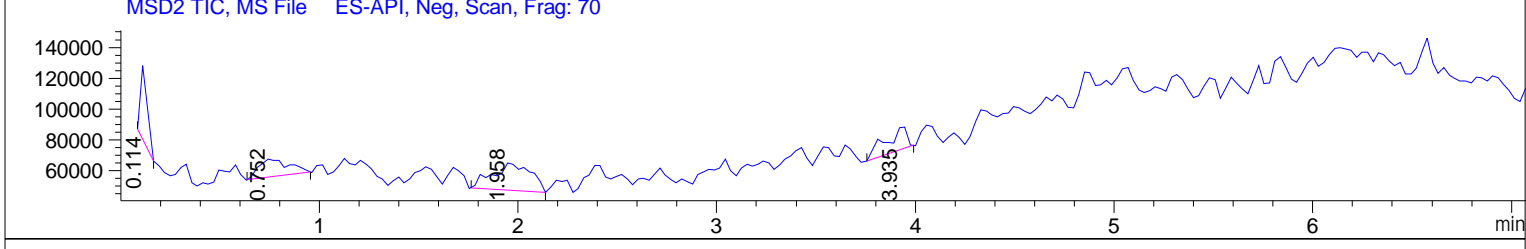
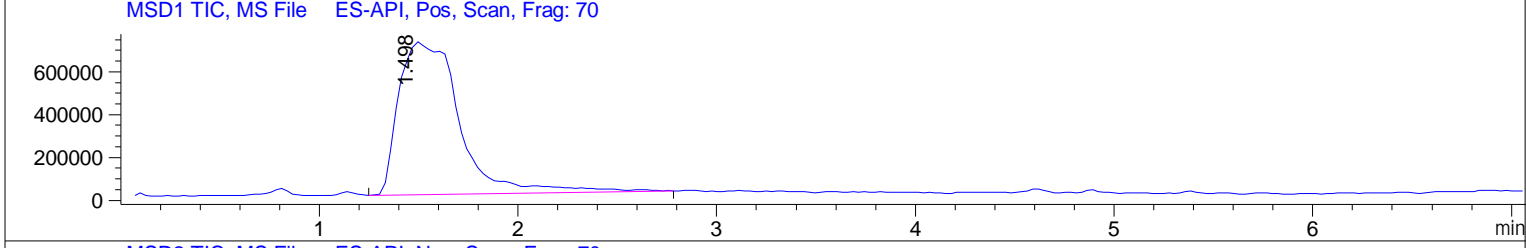
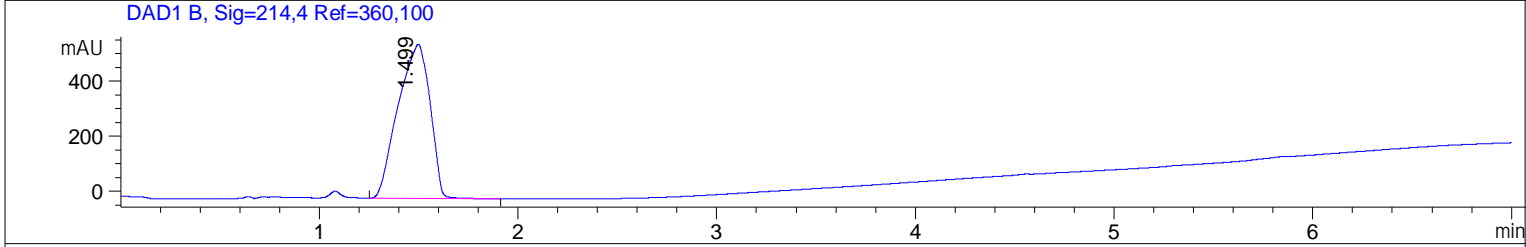
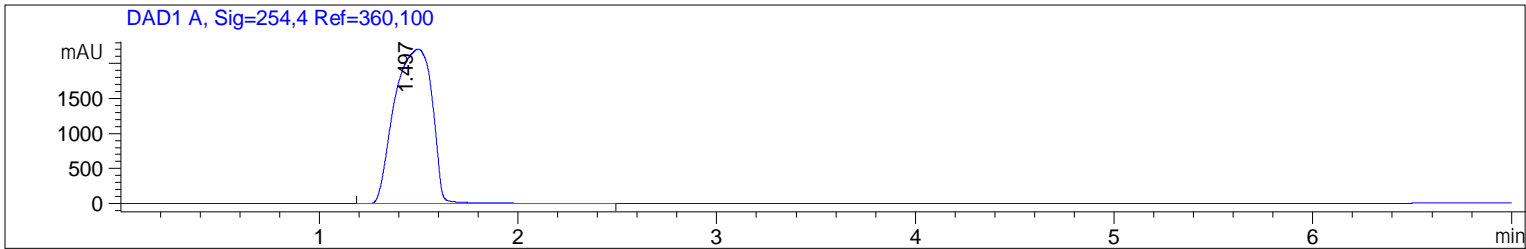


**Injection Date** : 21-Sep-18, 15:33:15 **Seq. Line** : 5  
**Sample Name** : 938-33-0 **Location** : P2-B-02  
**Acq. Operator** : SYSTEM **Inj** : 1  
**Spec. Reported** : MS Integration **Inj Volume** : 0.5 ul  
**Acq. Method**  
**Analysis Method**  
**Sample Info** :  
**Method Info** :



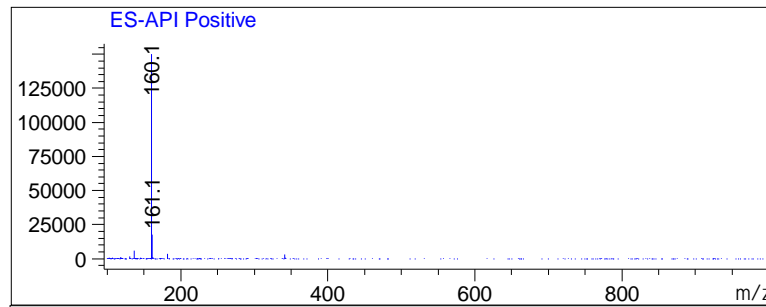
Integration Results for DAD1 A, Sig=254,4 Ref=360,100

RetTim	Width	Area	Height	Area%	MS(+)	MS(-)
0.66	0.03	8.19	4.23	0.03	136	134
0.79	0.06	19.31	4.23	0.07	130	134
1.08	0.05	7.30	1.94	0.03	136	134
1.50	0.16	29077.83	2207.35	99.81	160	134
4.55	0.05	10.15	2.98	0.03	160	113
6.70	0.11	11.70	1.27	0.04	160	113

Integration Results for DAD1 B, Sig=214,4 Ref=360,100

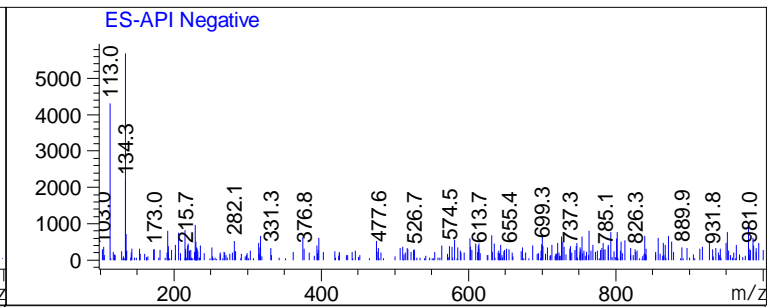
RetTim	Width	Area	Height	Area%	MS(+)	MS(-)
0.63	0.04	18.36	6.12	0.29	136	134
0.72	0.04	7.94	3.31	0.12	130	134
0.78	0.04	7.46	2.79	0.12	130	134
1.08	0.06	94.02	24.59	1.47	136	134
1.50	0.19	6238.92	559.62	97.65	160	134
4.56	0.16	22.20	1.74	0.35	160	113

Ret. Time: 1.50 <<<< POSITIVE SPECTRA >>>>



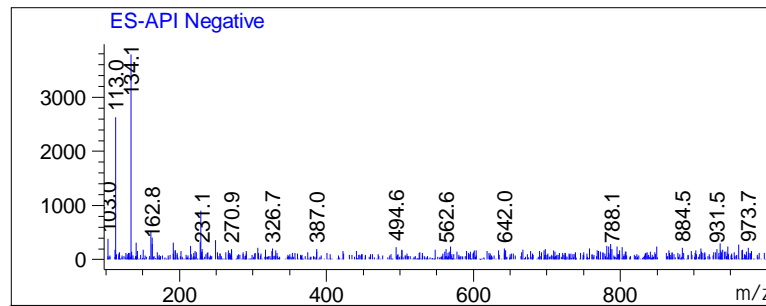
Base Peak Ion Ratios:				2nd Largest Peak Ion Ratios:			
Ion	Mass	Abundance	Ratio	Ion	Mass	Abundance	Ratio
A	160.10	150346	100.00	B	136.15	5653	100.00
A + 1	161.15	17616	11.72	B + 1	137.15	346	6.12
A + 2	162.15	1255	0.83	B + 2	138.15	114	2.01
A + 3	163.15	62	0.04	B + 3	139.10	100	1.77
A + 4	164.00	3	0.00	B + 4	140.00	12	0.21
A + 5	165.20	3	0.00	B + 5	141.15	48	0.85

Ret. Time: 0.11 <<<< NEGATIVE SPECTRA >>>>



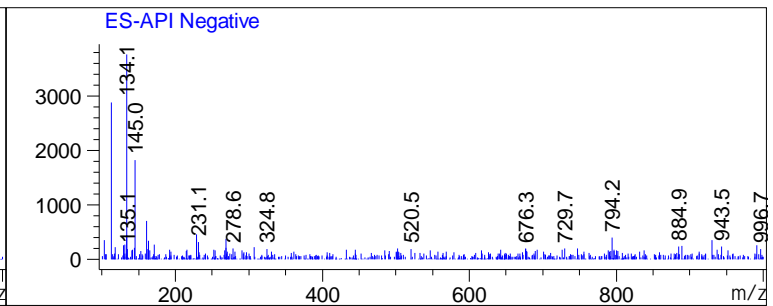
Base Peak Ion Ratios:				2nd Largest Peak Ion Ratios:			
Ion	Mass	Abundance	Ratio	Ion	Mass	Abundance	Ratio
A	134.05	5680	100.00	B	113.00	4312	100.00
A + 1	135.25	725	12.77	B + 1	113.70	42	0.98
A + 2	136.10	255	4.49	B + 5	117.70	216	5.00

Ret. Time: 0.75



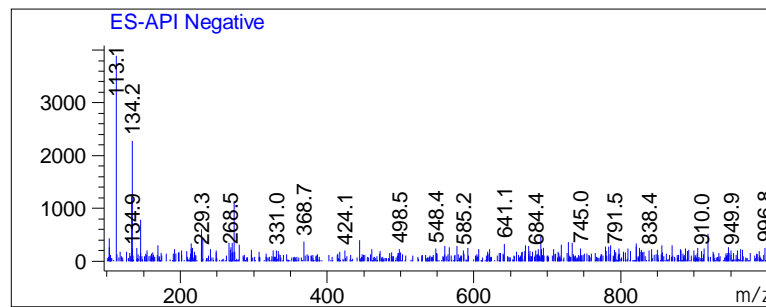
Base Peak Ion Ratios:				2nd Largest Peak Ion Ratios:			
Ion	Mass	Abundance	Ratio	Ion	Mass	Abundance	Ratio
A	134.05	3798	100.00	B	113.00	2627	100.00
A + 1	134.90	94	2.47	B + 1	114.10	88	3.35
A + 2	135.90	13	0.33	B + 4	116.80	16	0.60
A + 3	137.10	71	1.87	B + 5	117.95	72	2.73
A + 4	138.20	13	0.34				
A + 5	138.90	23	0.60				

Ret. Time: 1.96



Base Peak Ion Ratios:				2nd Largest Peak Ion Ratios:			
Ion	Mass	Abundance	Ratio	Ion	Mass	Abundance	Ratio
A	134.10	3770	100.00	B	113.10	2883	100.00
A + 1	135.10	190	5.04	B + 1	114.25	92	3.21
A + 2	136.00	30	0.79	B + 2	115.40	45	1.55
A + 4	138.20	17	0.44	B + 3	116.00	59	2.05
A + 5	138.70	54	1.43	B + 4	117.00	111	3.86
				B + 5	118.15	229	7.93

Ret. Time: 3.93



Base Peak Ion Ratios:				2nd Largest Peak Ion Ratios:			
Ion	Mass	Abundance	Ratio	Ion	Mass	Abundance	Ratio
A	113.05	3897	100.00	B	134.20	2277	100.00
A + 1	114.00	136	3.48	B + 1	135.30	101	4.44
A + 4	116.60	64	1.65	B + 2	136.00	28	1.24
A + 5	118.00	173	4.44				

\*\*\* End of Report \*\*\*